

Half-Scale Sleeveless Knit Dress

This dress fits the half-scale paper or stuffed dress forms I designed. The patterns to make the dress forms are available in the [GrowYourOwnClothes Etsy Shop](#). This dress fits a form that measures approximately 17 7/8" (45.5 cm) at the bust, 13 3/4" (35 cm) at the waist, 18 1/8" (46 cm) at the hip, and has an 8" (20.3 cm) back neck to waist measurement.

If you have a doll with an adult female figure, you may be able to scale down this pattern to fit it. I suggest determining the print scale based on the bust measurement. For example, if you have a doll with a 12" (30.5 cm) bust, print the pattern at $12 \div 17.875 \times 100\% = 67\%$ (or in metric, $30.5 \div 45.5 \times 100\% = 67\%$). After you reduce the pattern, you will need to re-draw the seam allowances, since they will also be scaled.

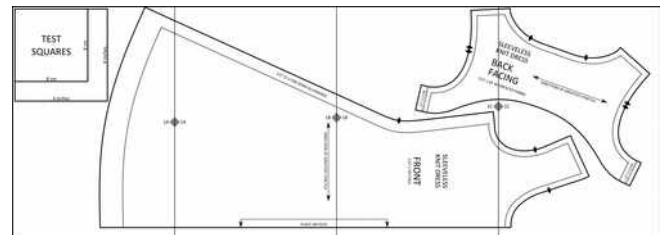


Materials

- For fabric 44" (1.1 m) or wider: 5/8 yard (0.6 m) of two-way stretch (sometimes called one-way stretch – stretches crosswise only) knit fabric.
- 1/4 yard (0.2 m) knit fusible interfacing

Instructions

1. To print the pattern, open this document in a pdf reader such as Adobe Acrobat Reader (not a web browser). The pattern is on pages 6 through 13. Print it on 8 1/2" x 11" or A4 size paper, at 100% of normal size ("no scaling" or "actual size"), unless you are scaling down the pattern. Trim along the borders as necessary and glue or tape the pattern sheets together, matching alignment marks. Cut out the individual pattern pieces.
2. Cut the dress front and back pattern pieces out of fabric. Fuse interfacing to the wrong side of the fabric before cutting out the front and back facing pieces.
3. Sew the front and back facings together at the side seams with a 1/2" (1.3 cm) seam allowance.



4. Grade the seam allowances, trimming the front seam allowance narrower.



5. Press the seam allowances toward the front and topstitch.



6. Sew the dress side seams with a 1/2" (1.3 cm) seam allowance. Either sew the seam with a short, narrow zig-zag stitch, your favorite stretch stitch, or stitch the seam on a serger. If you don't serge the seam, stitch again 1/4" (6 mm) away from the seamline and trim close to stitching. Press the seam toward the back of the dress.



7. Using 1/4" (6 mm) seam allowances, stitch the facing to the dress, right sides together, stitching **between notches only**.



8. Turn the dress right side out.



9. Stitch the facing shoulder seams right sides together with 1/4" (6 mm) seam allowances.



10. Twist the dress shoulder seams around to get the right sides together. Stitch the dress shoulder seams right sides together with 1/4" (6 mm) seam allowances. Press or finger press all shoulder seams open.



11. From the back side of the dress, reach your hand in between the facing and dress and pull the shoulder straps inside out to expose the unsewn portions of the neckline and armhole seams. Finish stitching these seams.



12. Turn the dress inside out.



13. Press the seam allowances toward the facing and understitch (stitch the seam allowance to the facing) as far as you can.



14. Here is a view of the finished understitching.



15. Hand tack the facing to the seam allowances at the side seams.



16. Hem as desired. I pressed up 1" (2.5 cm) and sewed a machine stitched blind hem.



TEST SQUARES

8 cm

8 cm

4 inches

4 inches

1A

